



The Heavy Lift Group

Göran Malmberg

- Owner 100%
- Bachelor's degree in economics
- Bachelor's degree in nautical science



Jonas Landhage

- Project Manager



Who are Begoma

- We are a privately owned, Swedish company with a heritage from end of 19th century.
- We are about 80 employees, and we have offices in Sweden, Poland, Czech Rep, The Netherlands, Ukraine and Zambia.
- We are experts in freight-forwarding, logistics and supply chains.
- Our head office is in Malmö, Sweden

What we do

- We serve industrial clients and trading companies with logistics- and shipping services.
- We contribute to our customer's success with our knowledge and experience.



Erik, Henrik and Fredrik Malmberg

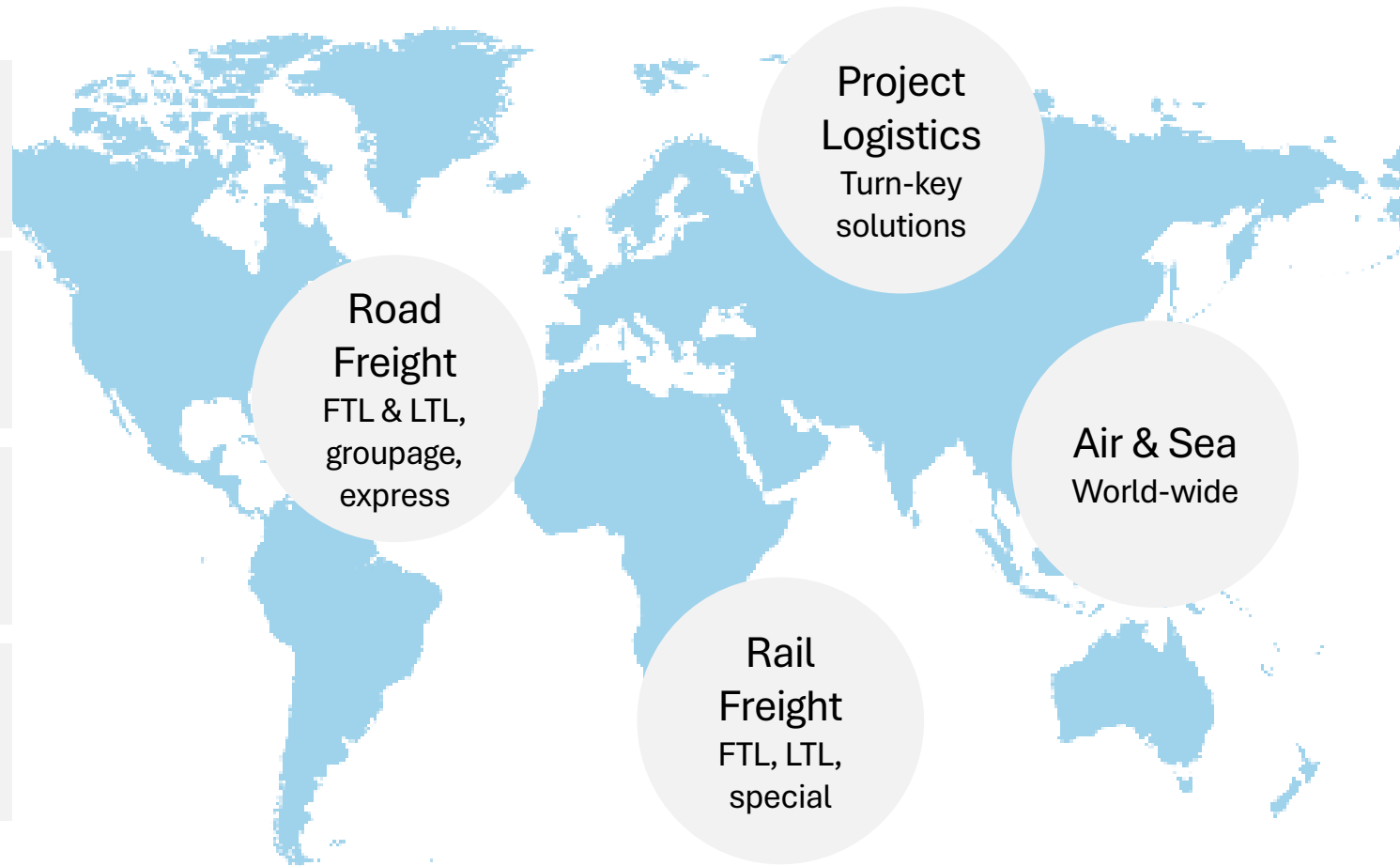
Main data

50 mEUR
turnover 2023

Head office
in Malmö

Project office
in Gothenburg

ca 40 000
orders per year



**Road
Freight**
FTL & LTL,
groupage,
express

**Project
Logistics**
Turn-key
solutions

Air & Sea
World-wide

**Rail
Freight**
FTL, LTL,
special

Key facts about Sweden

- Capital: Stockholm
- Government: Constitutional monarchy with parliamentary democracy
- Head of state: HM King Carl XVI Gustaf
 - heir to the throne is Crown Princess Victoria
- Population: 10 551 707 people
- Currency: SEK (10 SEK = 0.85 EUR)
- GDP: 6 295 billion SEK
- Main import: oil, car parts, food, electrical equipment
- Main export: vehicles, paper, iron, medical products
- Main ports: Gothenburg, Trelleborg, Stockholm, Gefle, Helsingborg, Norrköping
- Main airports: Stockholm (ARN), Gotenburg (GOT), Malmö (MMX), Luleå (LLA)



Certifications

- ISO 9001:2015 since 2007
- ISO 14001:2015, since 2007

- AEO (in process)

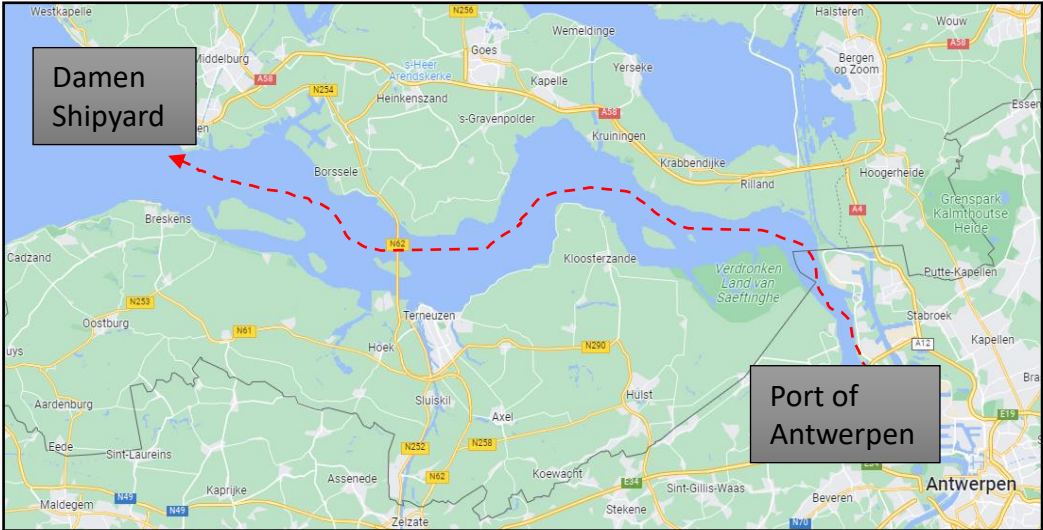


Transport for Kongsberg Maritime

- Time of transport Q2 2023
- From at Kongsberg Maritime in Rauma, Finland
- Destination at Damen Yachting in Vlissingen, Netherlands
- Cargo
 - 2 thrusters/pods, each with dimensions 6.42 x 2.98 x 4.39 meters and 45 300 kg

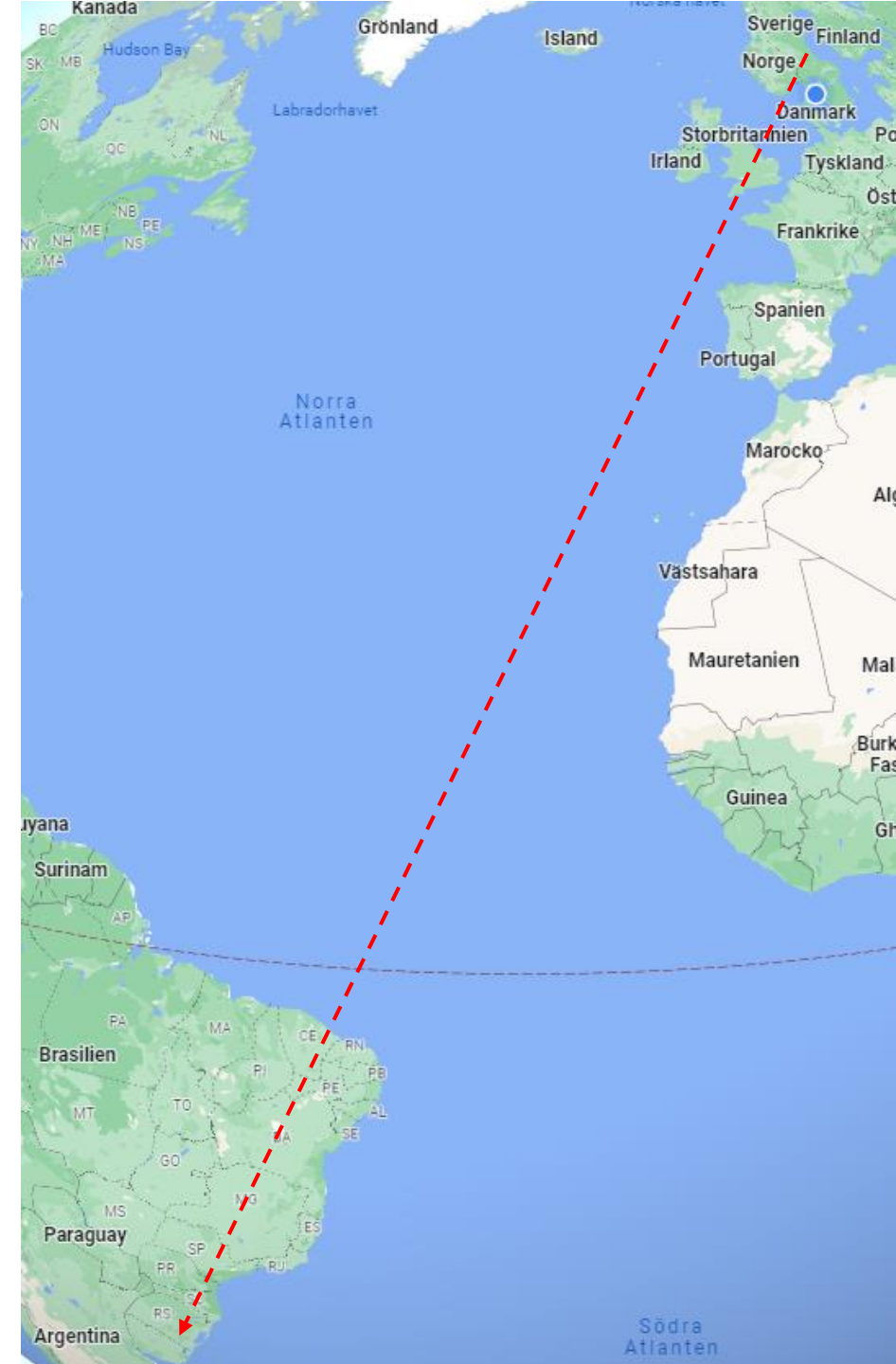


Transport for Kongsberg Maritime

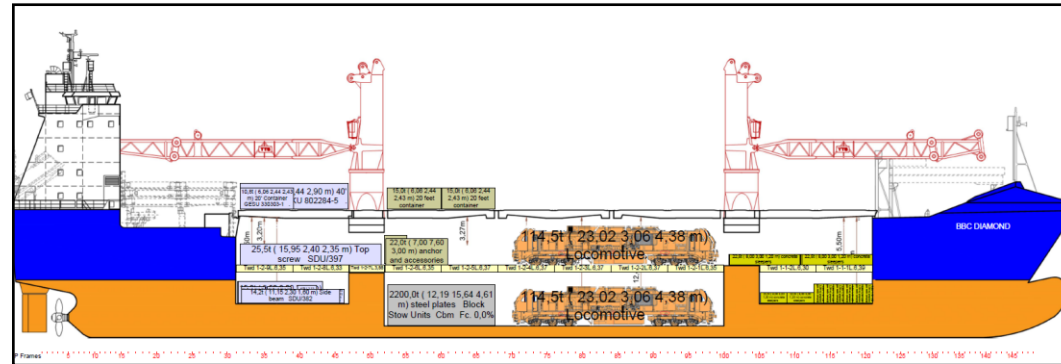


Project in cooperation with Hacklin and their customer Valmet

- From at Valmet in Sundsvall, Sweden
- Destination Guaiba, Brasil
- Cargo
 - Paper machinery
 - 2 rolls, 85 tons each
 - Total of 27 collies and 338 ton

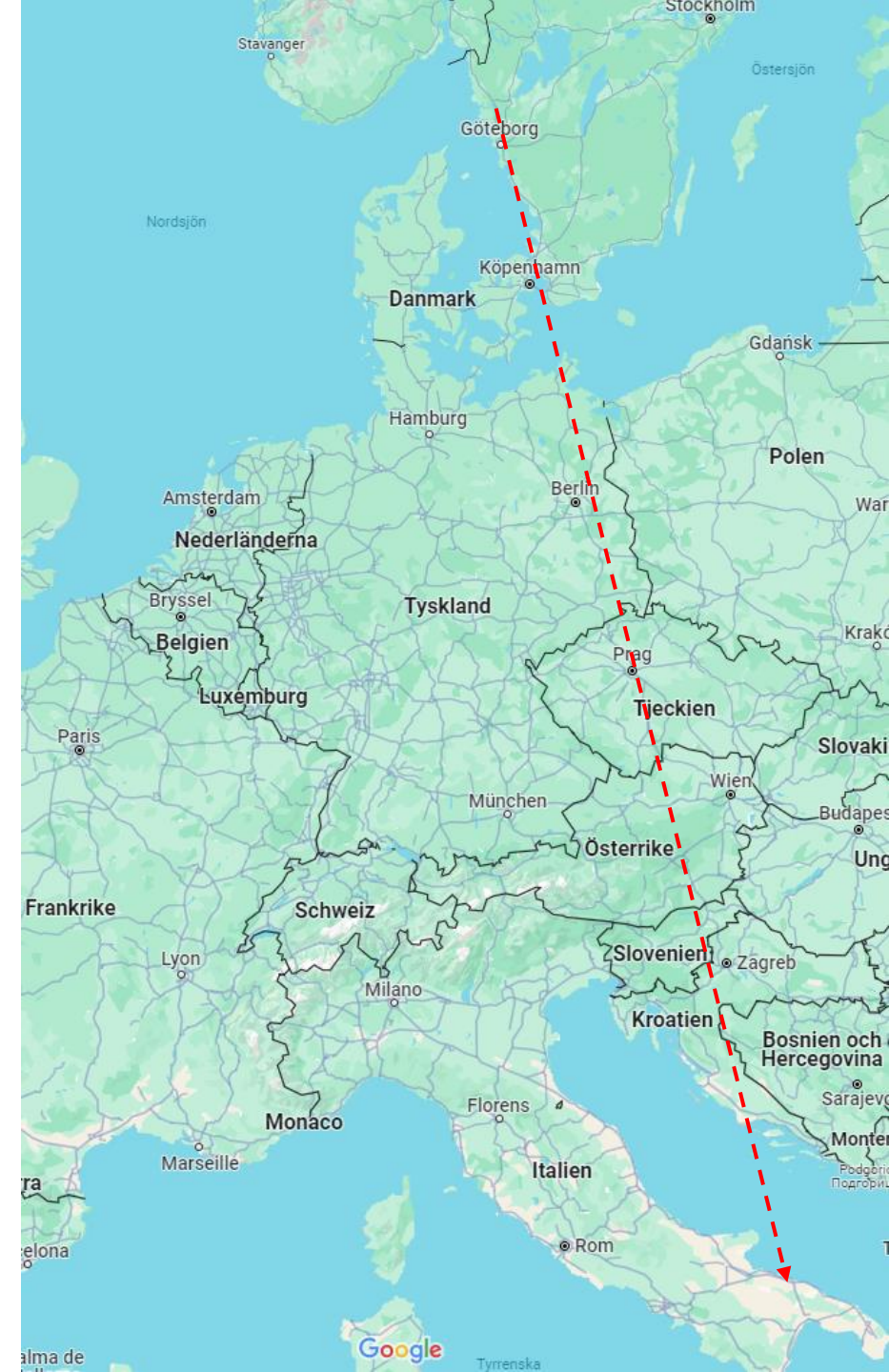
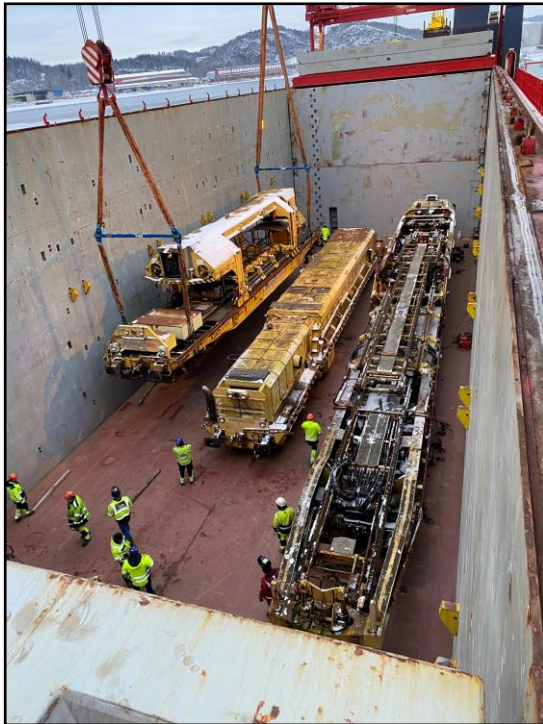


Project in cooperation with Hacklin and their customer Valmet

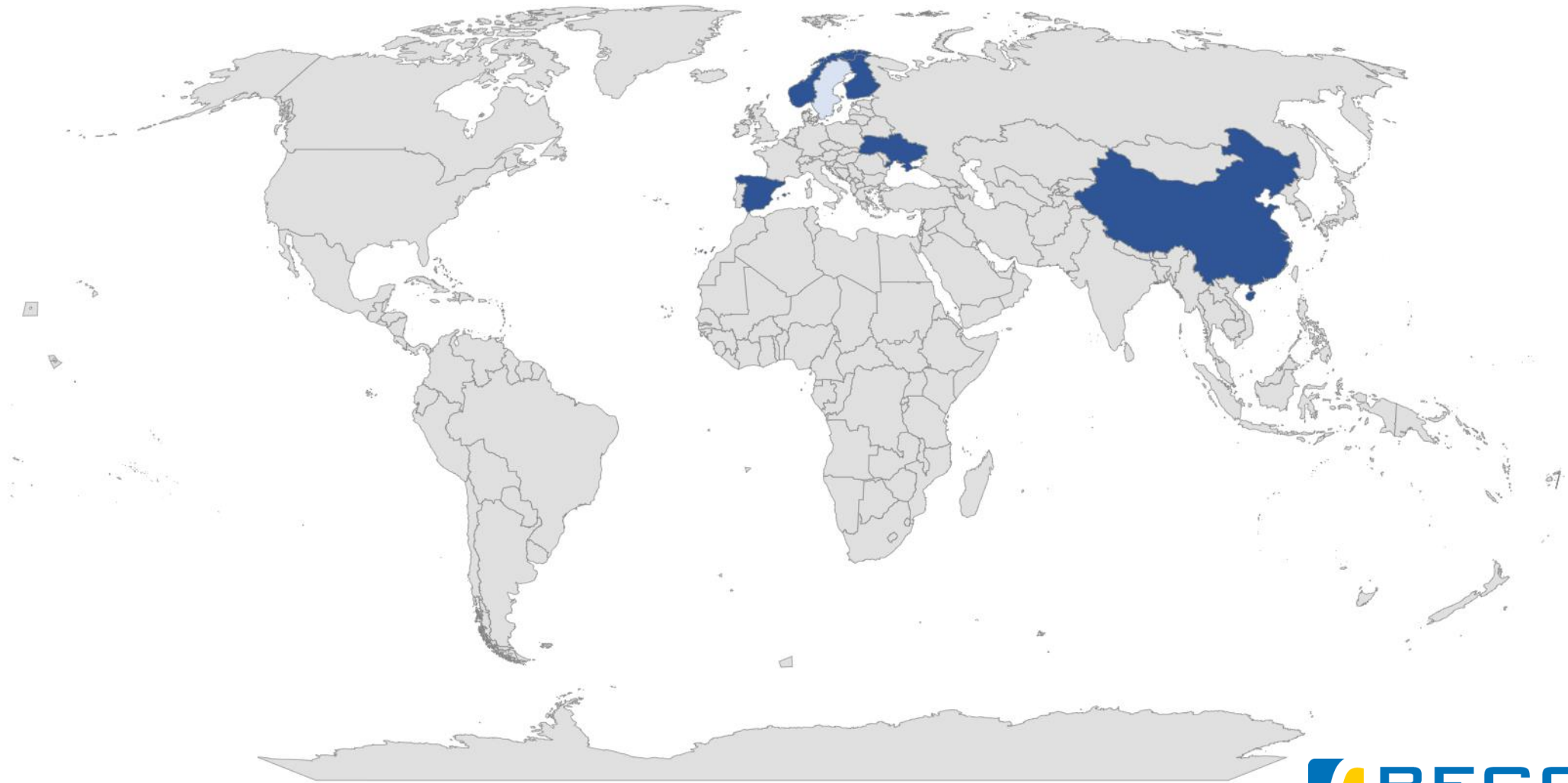


Project in cooperation with DCS Liburnus

- Time of transport: Q3 2023
- From Uddevalla, Sweden to Bari, Italy
- Cargo
 - Railway maintenance train
 - 211 ton



Partner countries



A selection of our valuable customers

Customers



Project team

- Anders Olsson
 - 2009 – present: Freight forwarding, air, sea, road, customs
 - 2007 – 2009: Education, International transports and logistics, KY University Gothenburg
- Anton Jönsson
 - 2016 – present: Working with road, express and project transports
 - 2014-2016: Sales and road transports
- Christer Hallén
 - 2023 – present: Freight-forwarding air, sea, road
 - 2009 – 2023: working with packaging and logistics
- Hampus Magnusson
 - 2017 – present: Export handling at global company, port agency, liner shipping, project logistics (road, sea, BBK, air, customs)
 - 2019 – 2021: Mphil in Business Communications, Gothenburg University
 - 2016 – 2019: BSc in International Logistics, Chalmers Technical University
- Jonas Landhage
 - 2009 – present: 15 years within project logistics (road, sea, BBK, air, customs).
 - 2007 – 2009: Education, international transport and logistics, KY University Gothenburg



Anders



Anton



Christer



Jonas



Hampus

Main contact

Jonas Landhage

- Phone: +46 31 709 33 22
- Email: jonas.Landhage@begoma.se



Jonas

